



# WEI ZHUN

Accurate Positioning / Fast Exchange / Flexibility



# WEI ZHUN



## index

Grip Type Tooth Pre-Bite Machine	02
Quick Change Plate	03 - 05
L - Shaped Base	06
Quick Change Plate	07 - 10
Grip Center Clamp Series	11 - 16
Origin Clamp System	17 - 18
Processing Photos	19 - 20
Soft Jaws	21 - 22



“WEI” means we pay attention to every detail of the making process, and “ZHUN” means falcon bird, which can fly fast, also a good hunter of nature. We set high demand to our company that we should be deliberate to every production detail carefully for perfection through the manufacturing process.

We request our product quality should be stable, the quality management and dimensional requirements must be practicable. We expect ourselves work as efficiently as Falcone birds, also, we hope that we can make more accurate and greater products in the future.

Precision, Milling, Clamping and Zero-Point  
Superior Machining Solutions  
Achieving Precision at Every Critical Step

Stability and Reliability in  
or Enhanced Performance

# Accurate Positioning Fast Exchange Flexibility

PAT. Taiwan M563936 / M573673 / M674329  
German Nr. 20 2018 105 390  
US 11 090 775 B2  
Japan 3207865

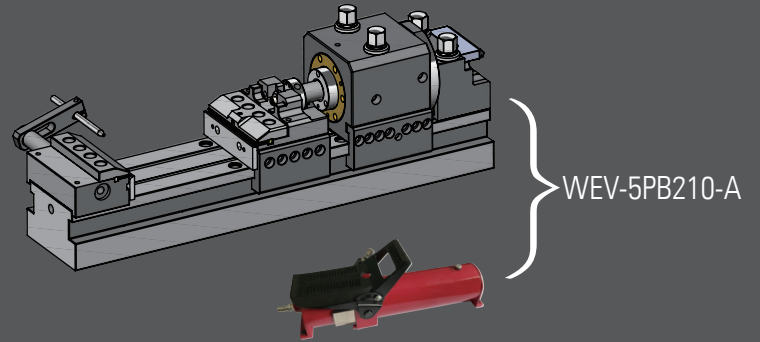


WEV-5PB210



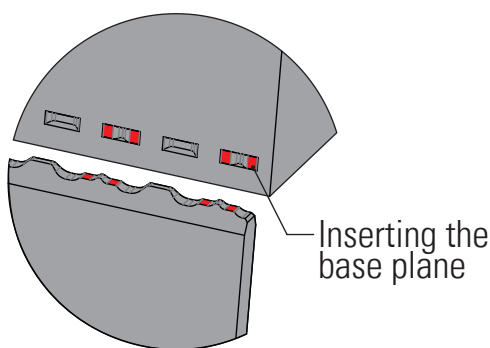
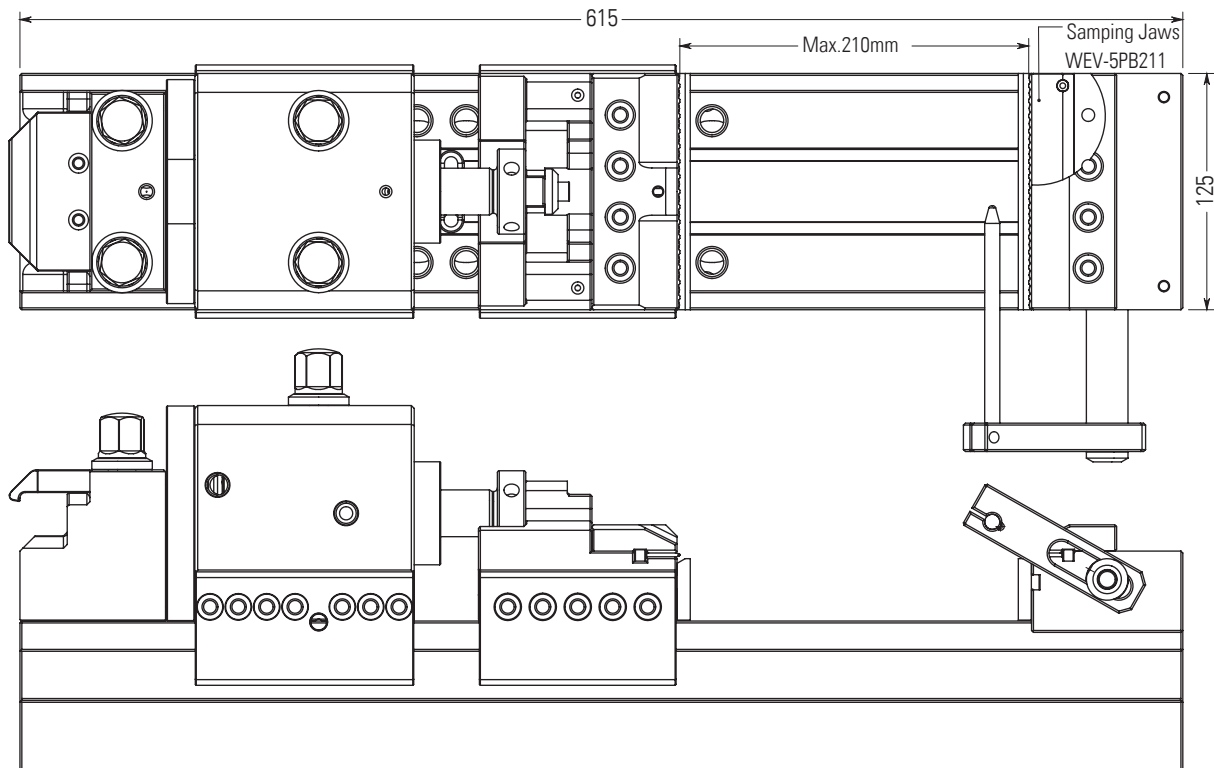
# Grip Type Tooth Pre-Bite Machine

(WEV-5PB210+WEV-5PB210-A)

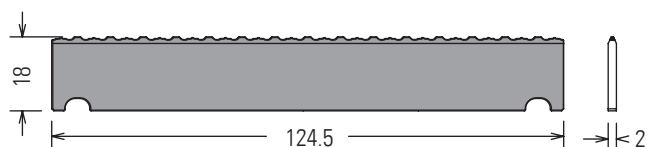


	Technical Data	L	W	H	Clamping Range	Clamping Force	Compressed Air	Set/Kg
Grip Type Tooth Pre-Bite Machine	WEV-5PB210	950	600	1050	210mm	HRC 38°	6-10 Bar	215
Grip Type Tooth Pre-Bite Machine	WEV-5PB210-A	615	175	345	210mm	HRC 38°	6-10 Bar	117

High-Pressure Air-to-Oil Booster System  
 400kg/cm<sup>2</sup> | High-pressure air-to-oil conversion equipment, max hydraulic pressure up to 400kg/cm<sup>2</sup>  
 Maximum operating pressure 0.7Mpa (Hydraulic output = 21900kg/cm<sup>2</sup>)

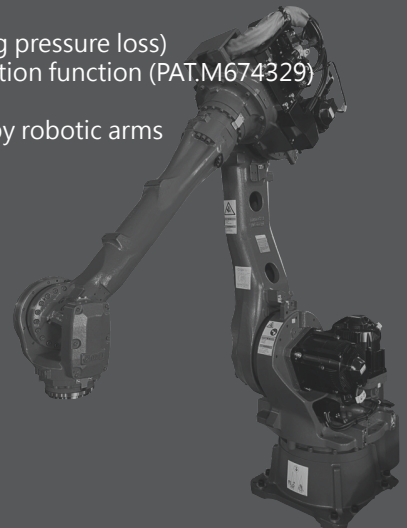


	Technical Data	Quantity	Set/Kg
Samping Jaws	WEV-5PB211	1 Set of 2	0.07



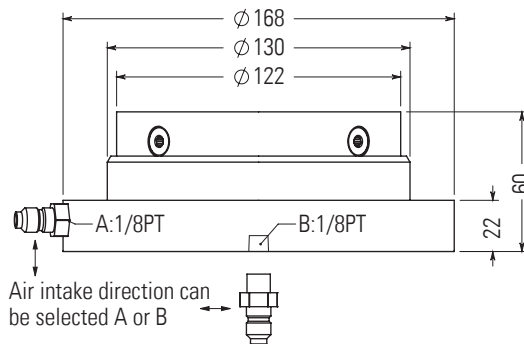
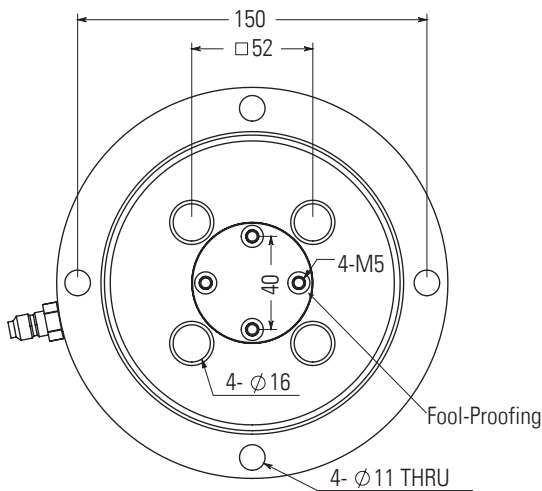
# Quick Change Plate

Mechanical fail-safe locking (during pressure loss)  
 Pneumatic unlocking + forced ejection function (PAT.M674329)  
 Improves operational smoothness  
 Ideal for rapid loading/unloading by robotic arms



	Technical Data	Dimensions	Clamping Force	Repeatability	Compressed Air	Set/Kg
Quick Change Plate-52P	WE-350300	Ø168x60mm	10000N	±0.005mm	6-10 Bar	6.5
Quick Change Plate-96P	WE-350500	Ø236x62mm	12000N	±0.005mm	6-10 Bar	14.6

## WE-350300



Optional Accessories

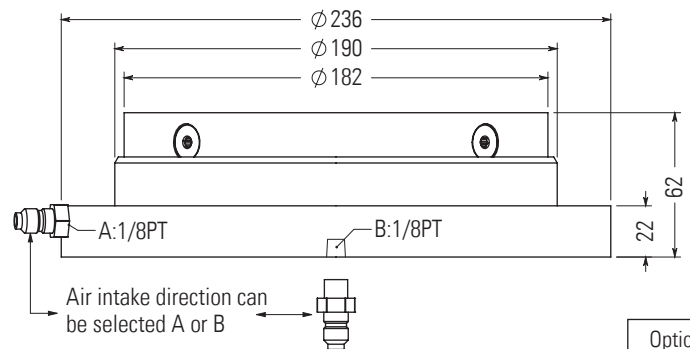
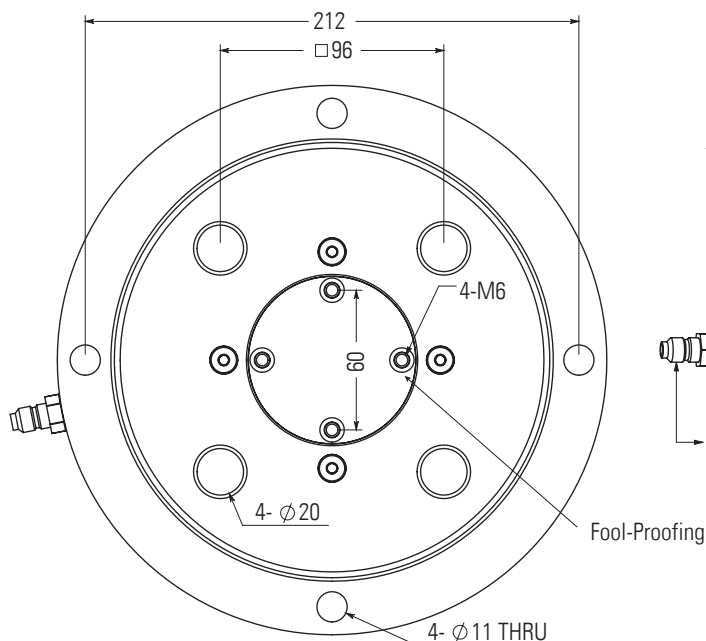
WEV-0316

1 set of 4

Optional Accessories

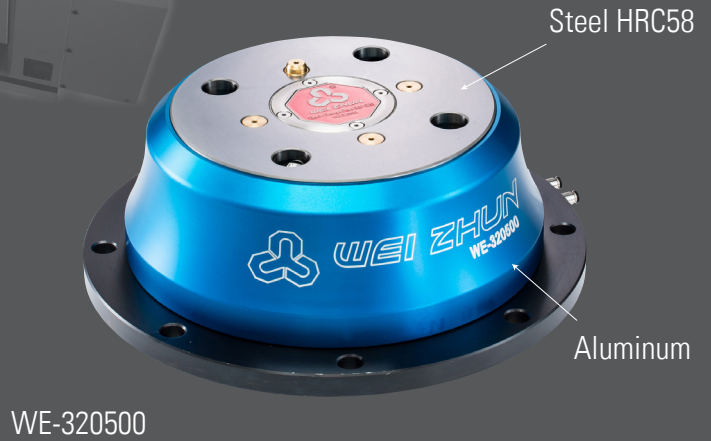
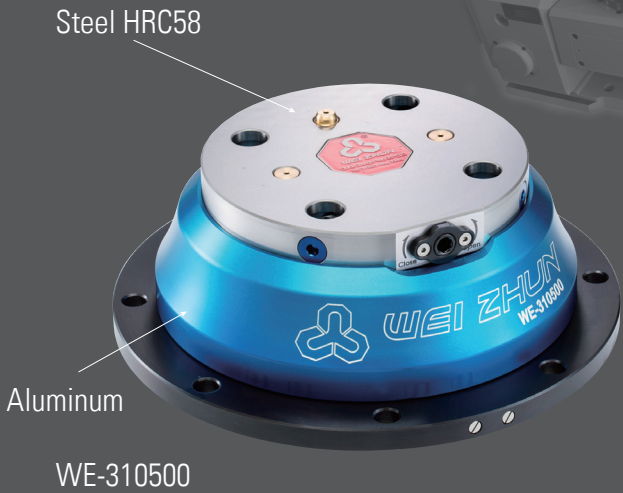
Fool-Proofing

## WE-350500



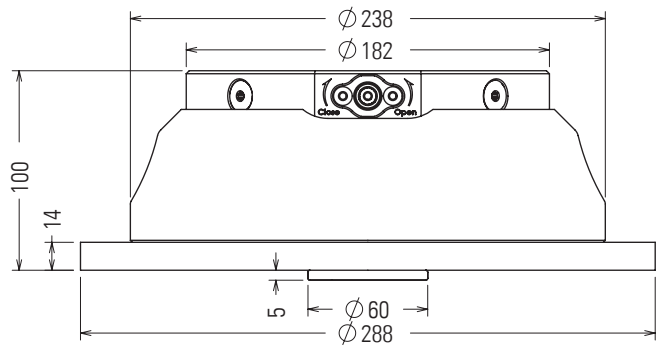
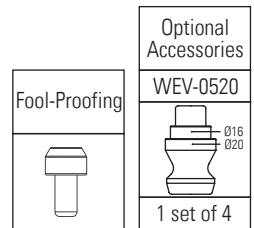
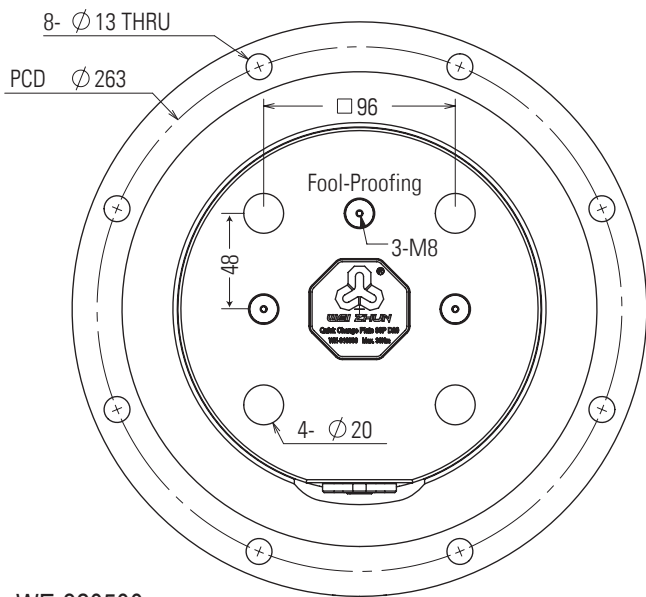
Optional Accessories	WEV-0520
Fool-Proofing	Optional Accessories
	1 set of 4

# Quick Change Plate

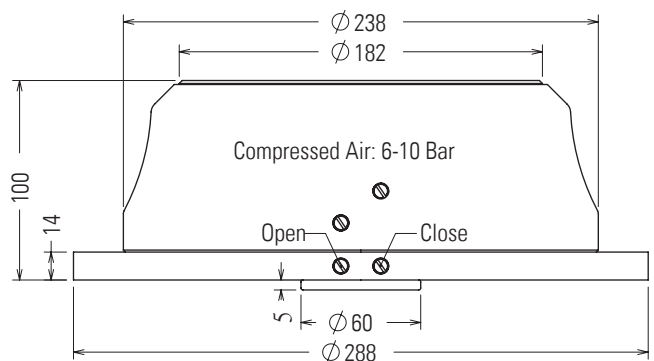
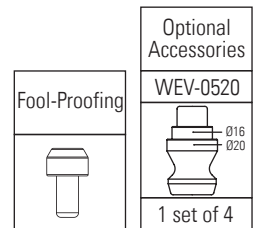
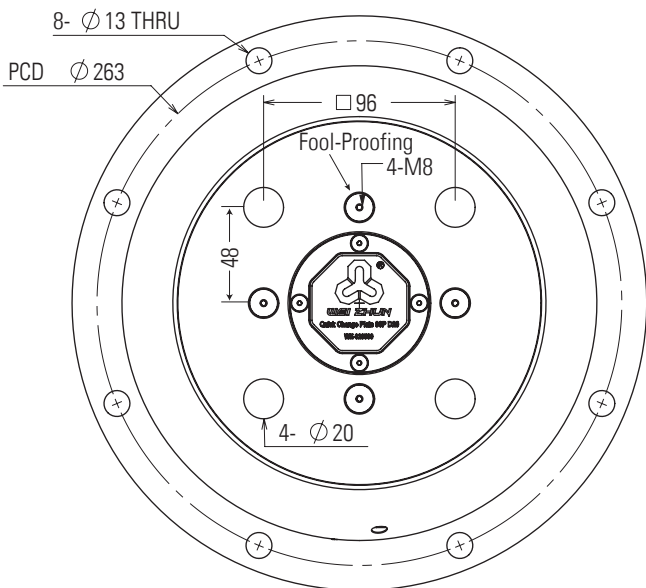


	Technical Data	Dimensions	Clamping Force	Repeatability	Recommended	Set/Kg
Quick Change Plate-96P	WE-310500	Ø288x100mm	15000N	±0.005mm	Max.30Nm	17.0
Quick Change Plate-96P	WE-320500	Ø288x100mm	15000N	±0.005mm	6-10 Bar	19.0

WE-310500



WE-320500



# Quick Change Plate

Mechanical fail-safe locking (during pressure loss)  
 Pneumatic unlocking + forced ejection function (PAT.M674329)  
 Improves operational smoothness  
 Ideal for rapid loading/unloading by robotic arms



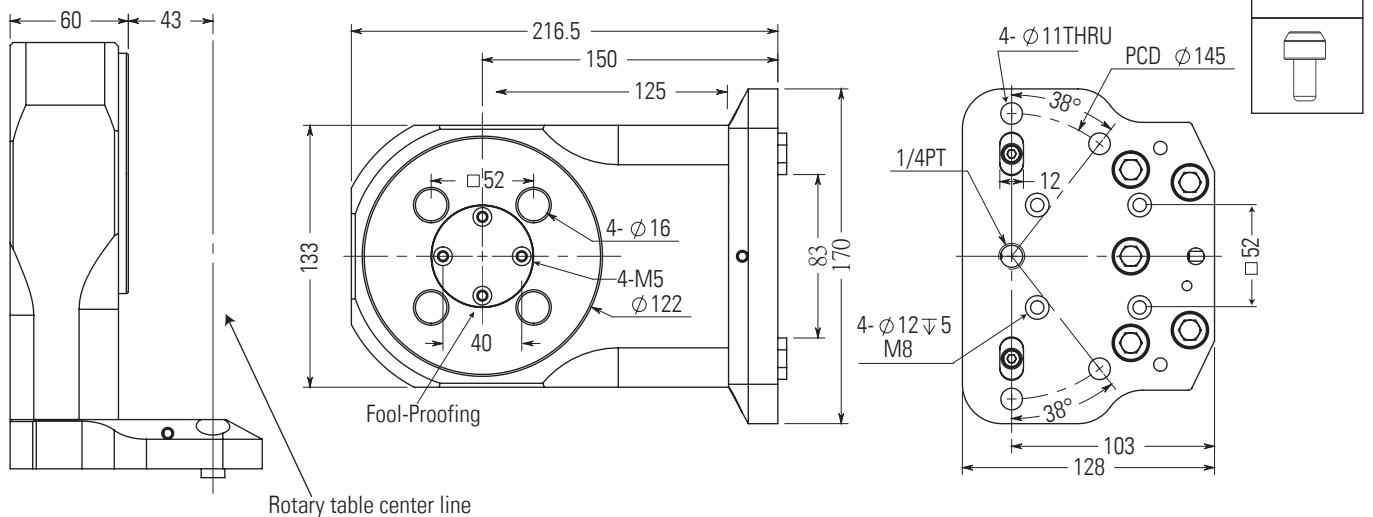
WE-350201-A



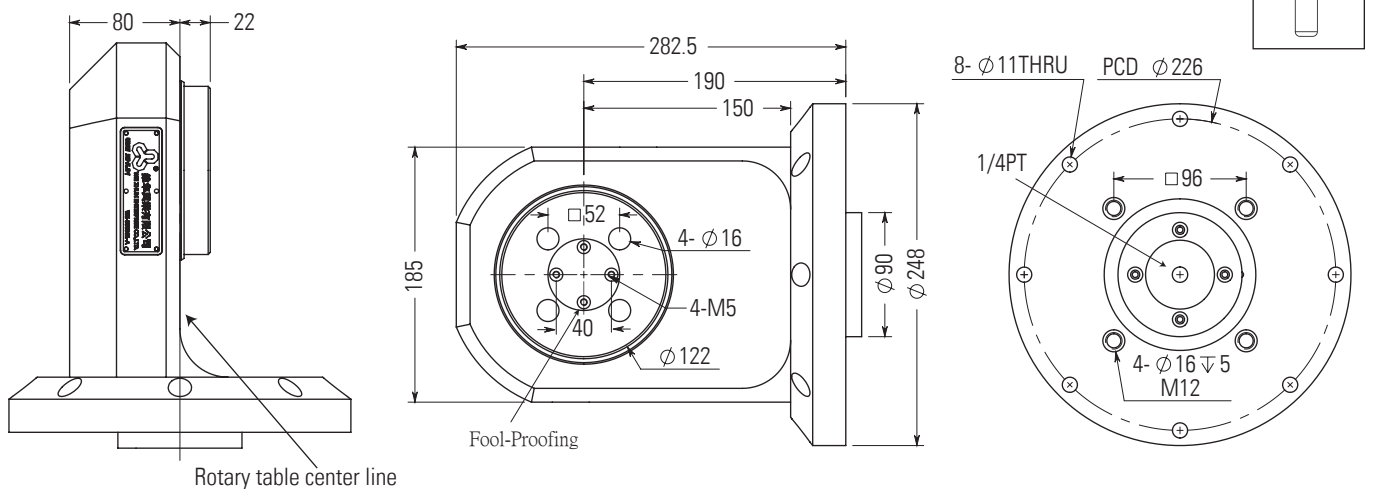
WE-350301-A

	Technical Data	Dimensions	Clamping Force	Repeatability	Compressed Air	Set/Kg
D170 L-Type Quick Change Plate	WE-350201-A	170x128x221mm	10000N	±0.005mm	6-10 Bar	12.8
D250 L-Type Quick Change Plate	WE-350301-A	Ø248x294mm	10000N	±0.005mm	6-10 Bar	33.6

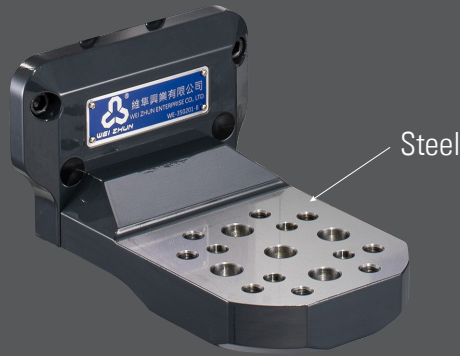
WE-350201-A



WE-350301-A



# L - Shaped Base



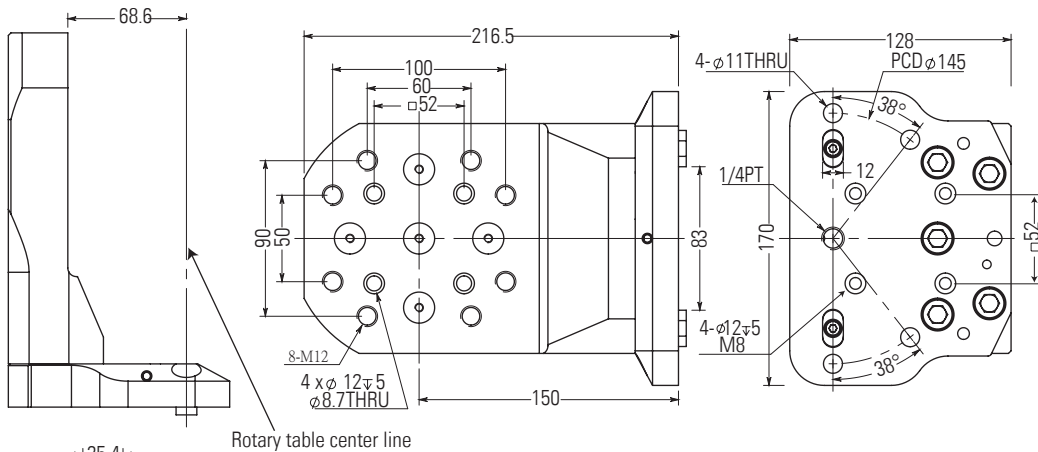
WE-350201-B



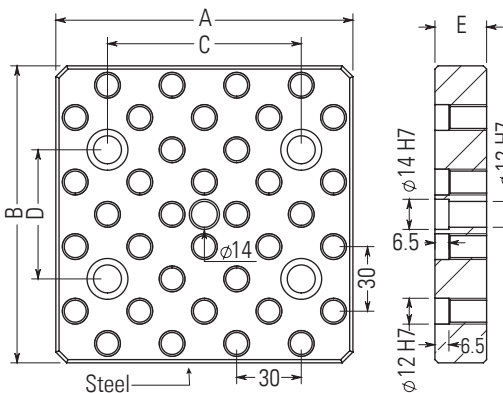
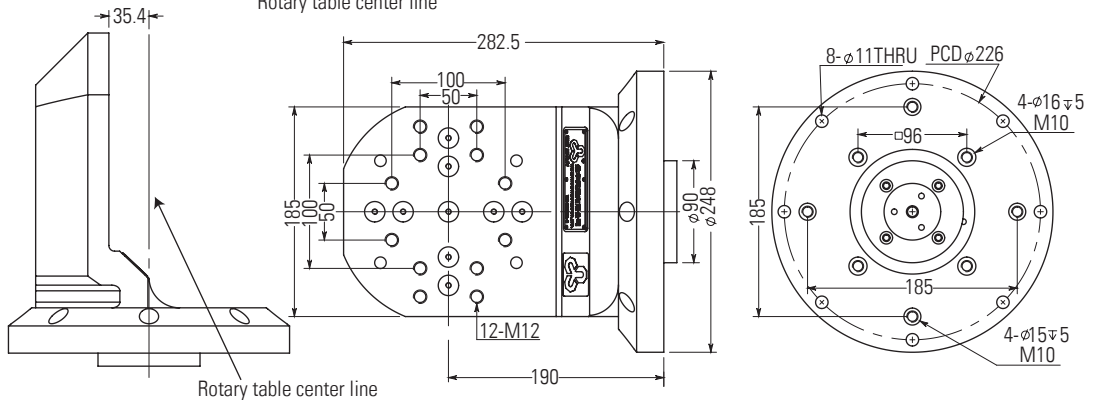
WE-350301-B

	Clamping	Compressed	
	Technical Data	Dimensions	Set/Kg
D170 L-Shaped Base	WE-350201-B	170x128x221mm	10.1
D250 L-Shaped Base	WE-350301-B	Ø248x294mm	31.6

WE-350201-B



WE-350301-B

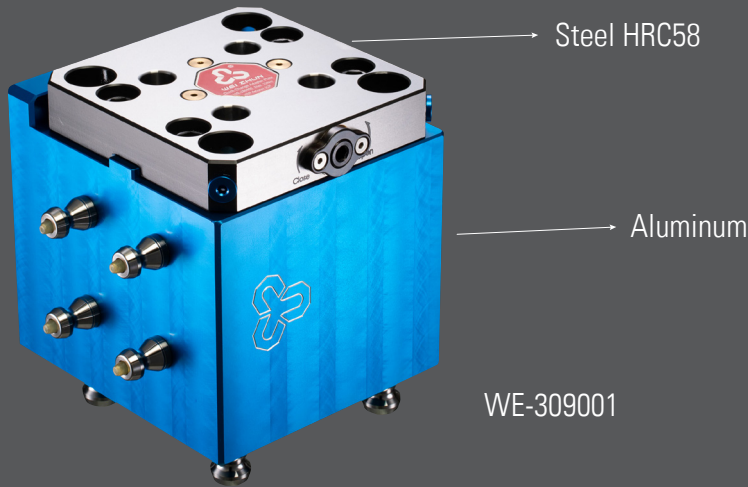


Technical Data	A	B	C	D	E	Set/Kg
WE-350205	138	138	90	60	24mm	2.8
WE-350207	185	185	120	90	24mm	5.3

Example of use



# Quick Change Plate

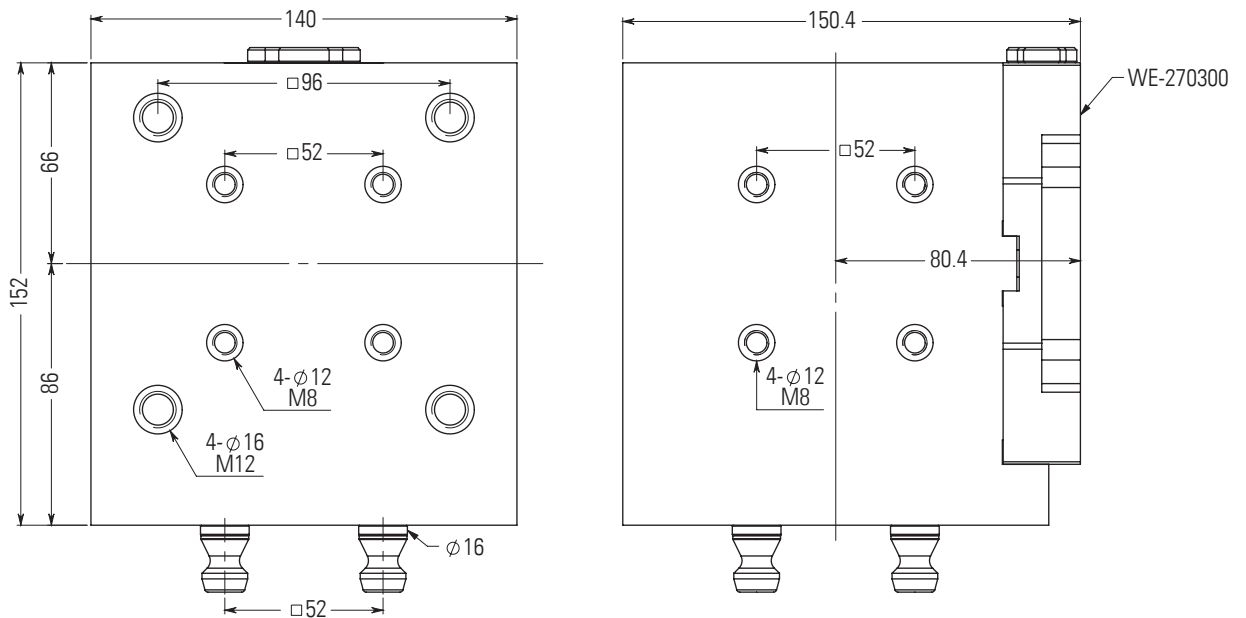


WE-309001

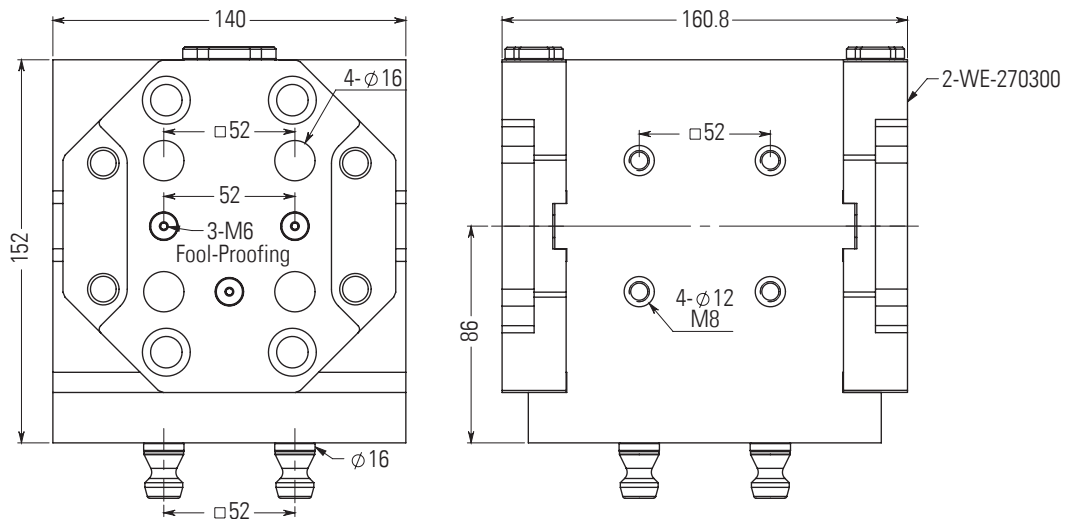
## Clamping

	Technical Data	Dimensions	Force	Repeatability	Recommended	Set/Kg
L-Shaped Base 52P	WE-309001	140x150.4x152mm	15000N	±0.005mm	Max.25Nm	10.5
L-Shaped Base 52P	WE-309005	140x160.8x152mm	15000N	±0.005mm	Max.25Nm	13.9

WE-309001



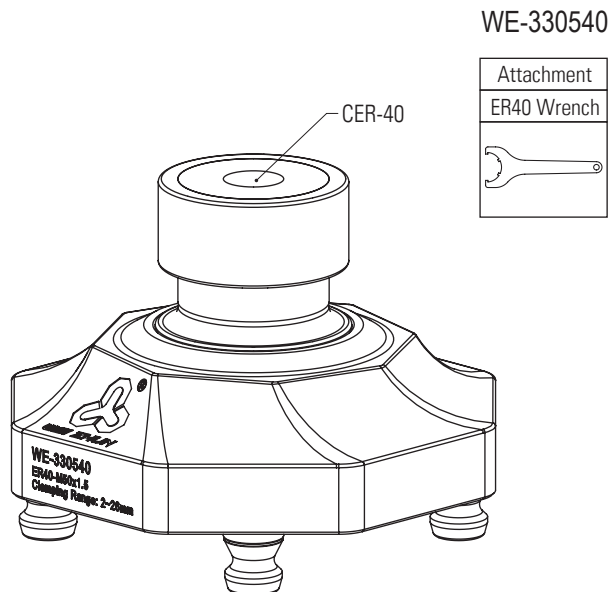
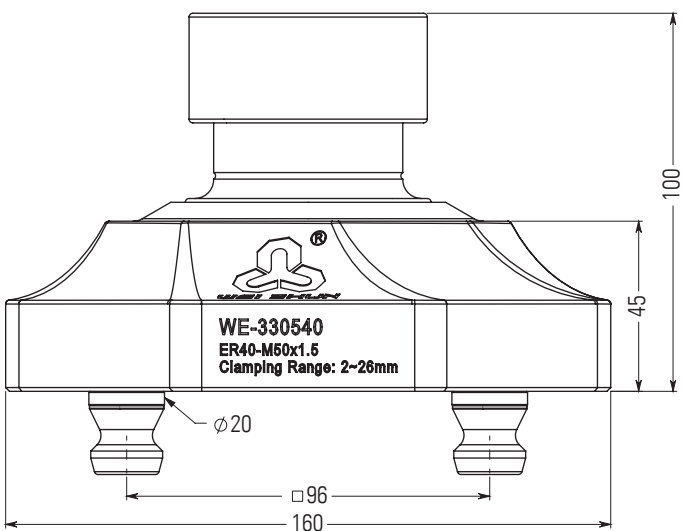
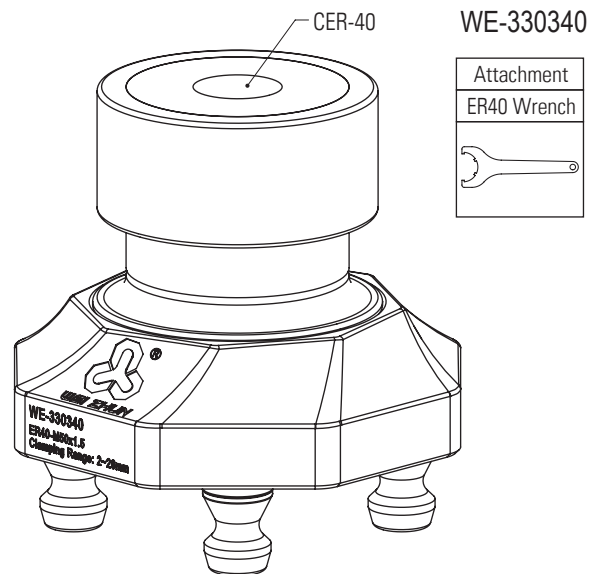
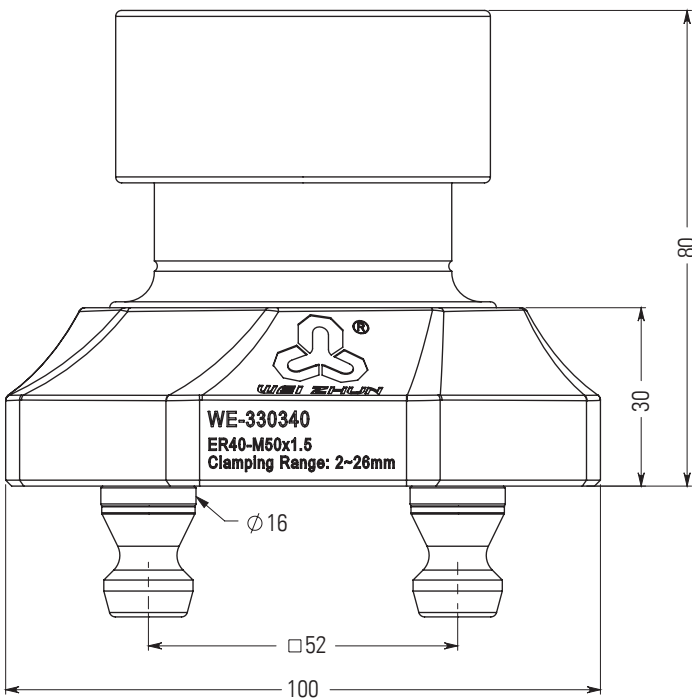
WE-309005



# Quick Change Plate



	Technical Data	Dimensions	Range	Set/Kg
52P-CER40	WE-330340	100x100x108mm	2-26	1.4
96P-CER40	WE-330540	160x160x130mm	2-26	3.1



# Quick Change Plate

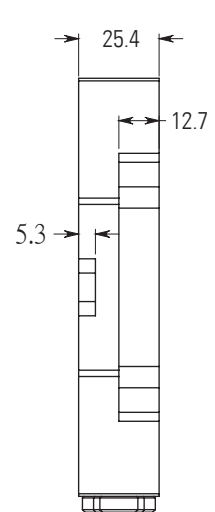
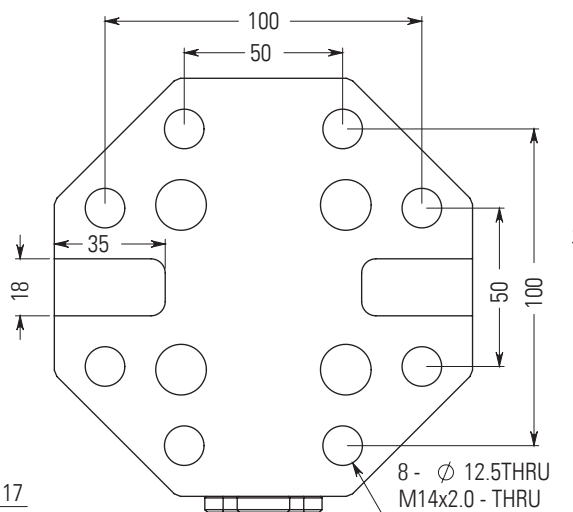
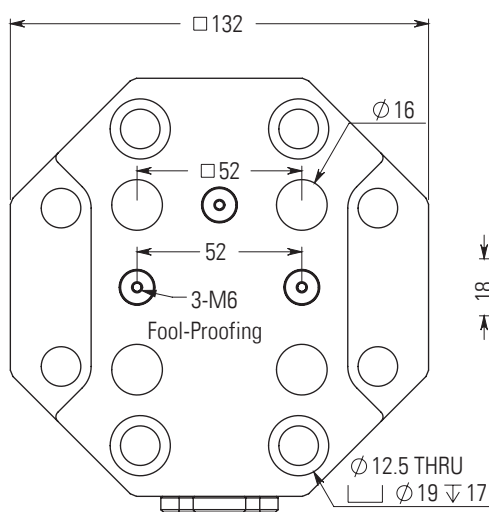
Steel HRC58



## Clamping


	Technical Data	Dimensions	Force	Repeatability	Recommended	Set/Kg
Quick Change Plate-52P	WE-270300	25.4x132x132mm	15000N	±0.005mm	Max.25Nm	2.0
Quick Change Plate-96P	WE-260500	25.4x182x182mm	15000N	±0.005mm	Max.30Nm	4.3

### WE-270300



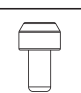
Optional Accessories

WEV-0316

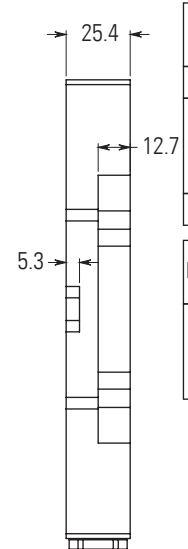
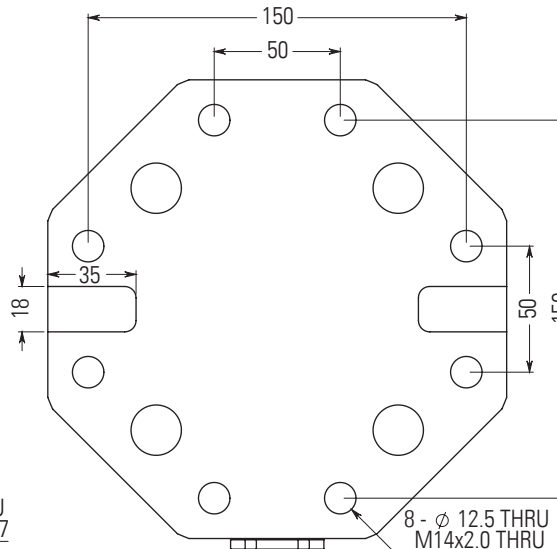
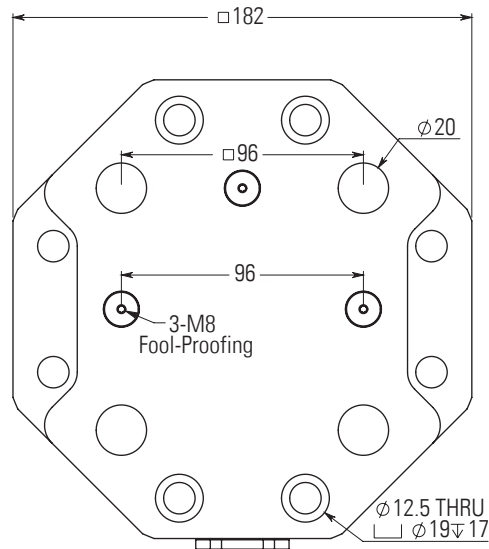


1 set of 4

Fool-Proofing

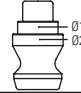


### WE-260500



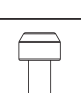
Optional Accessories

WEV-0520



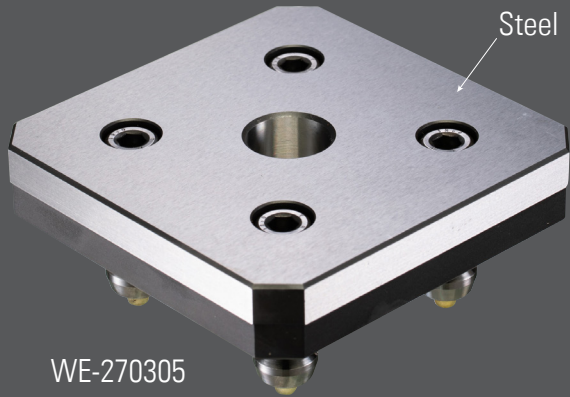
1 set of 4

Fool-Proofing



# Quick Change Plate

Reference Calibration Plate



WE-270305

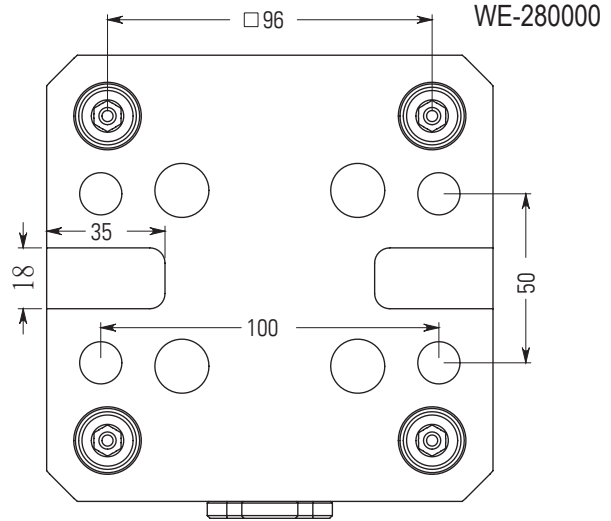
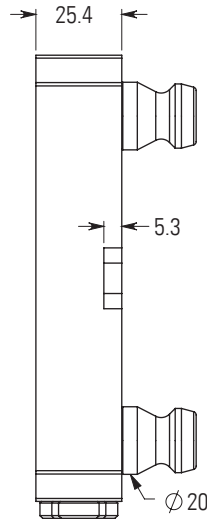
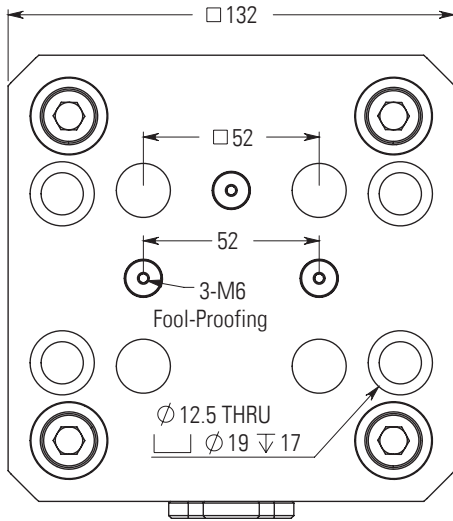
96 to 52 Quick Change Adapter Plate



WE-280000

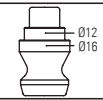
## Clamping

	Technical Data	Dimensions	Force	Repeatability	Recommended	Set/Kg
96 to 52 Quick Change Adapter Plate	WE-280000	25.4x132x132mm	15000N	±0.005mm	Max.25Nm	3.0



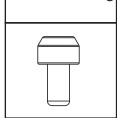
### Optional Accessories

WEV-0316



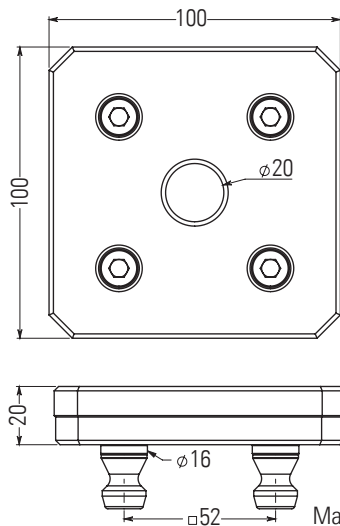
1 set of 4

### Fool-Proofing



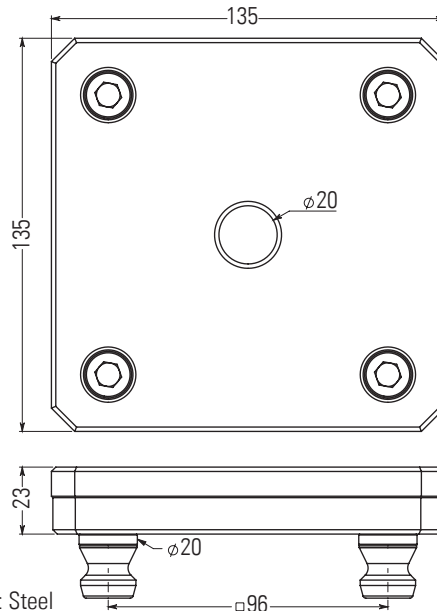
	Technical Data	Dimensions	Set/Kg
Reference Calibration Plate	WE-270305	23x100x100mm	1.6
Reference Calibration Plate	WE-260505	23x135x135mm	3.0

WE-270305



Material: Steel

WE-260505



# Grip Center Clamp Series



Steel HRC50

WEV-2AS090



Steel HRC50

WEV-3AS090

## S-Type Jaws

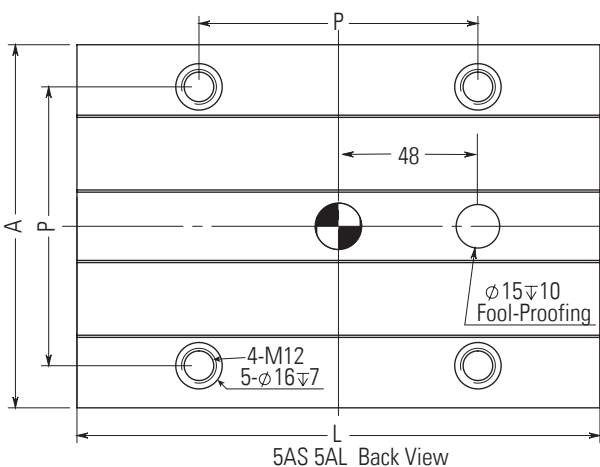
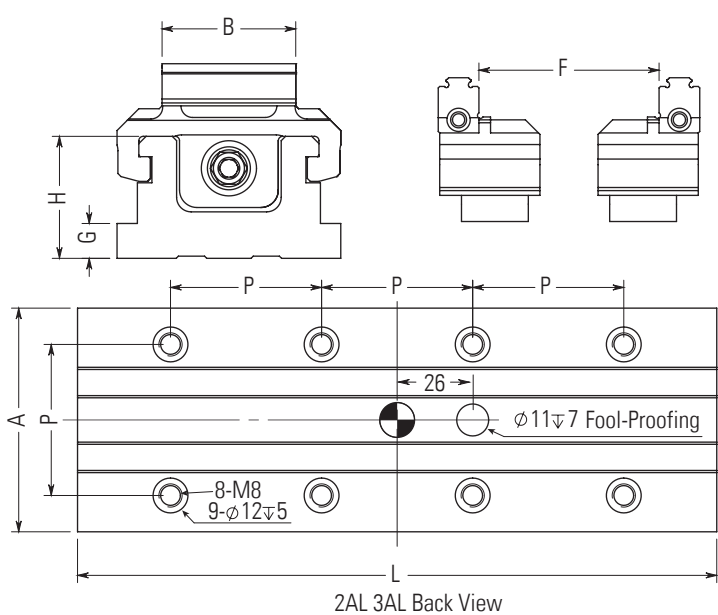
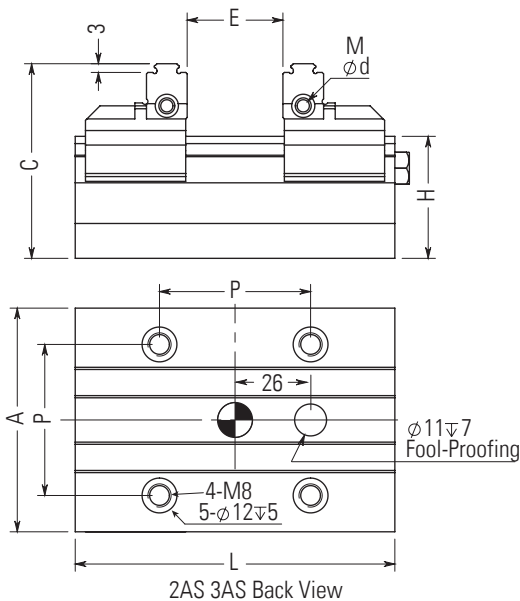
Suitable for pre-stamping indentations  
 Low clamping force, reduces material deformation  
 Low wear on clamping devices, long service life  
 Small tightening tools, ergonomic design  
 Material: Steel HRC50

## A-Type Jaws

Suitable for light-cutting machining  
 Saves material, shortens production time  
 Improves dimensional stability  
 Material: Steel HRC50

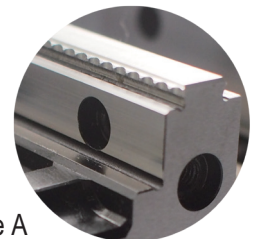


Technical Data	Clamping Range											Clamping Force	Torque	
	A	B	C	L	P	M	d	H	G	E	F		Vise Assembly	Set/Kg
WEV-2AS090	77	46	67	110	52	5	8	42	12	0-50	43-90	13kN/60Nm	Max.70Nm	2.5
WEV-2AL200	77	46	67	220	52	5	8	42	12	0-150	43-200	13kN/60Nm	Max.70Nm	4.1
WEV-3AS090	77	77	67	110	52	5	8	42	12	0-50	43-90	13kN/60Nm	Max.70Nm	2.6
WEV-3AL200	77	77	67	220	52	5	8	42	12	0-150	43-200	13kN/60Nm	Max.70Nm	4.2
WEV-5AS155	125	125	86	180	96	8	12	53	24	0-90	80-155	15.6kN/85Nm	Max.100Nm	9.0
WEV-5AL205	125	125	86	230	96	8	12	53	24	0-140	80-205	15.6kN/85Nm	Max.100Nm	10.6



Workpiece Pre-stamping for Steel.

Workpiece Pre-stamping for Aluminum.



WEV-03 Optional Accessories		WEV-05 Optional Accessories	
WEV-0300	WEV-0316	WEV-0500	WEV-0520
1 set of 2	1 set of 4	1 set of 4	1 set of 4

### S-Type Jaws

Suitable for pre-stamping indentations  
 Low clamping force, reduces material deformation  
 Low wear on clamping devices, long service life  
 Small tightening tools, ergonomic design  
 Material: Steel HRC50

### A-Type Jaws

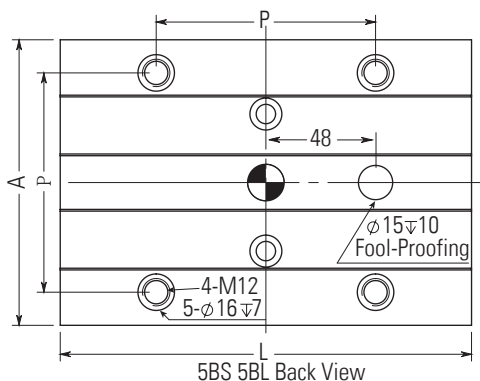
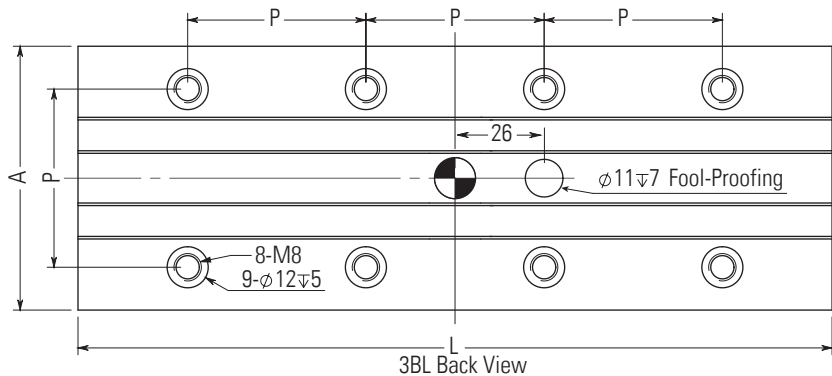
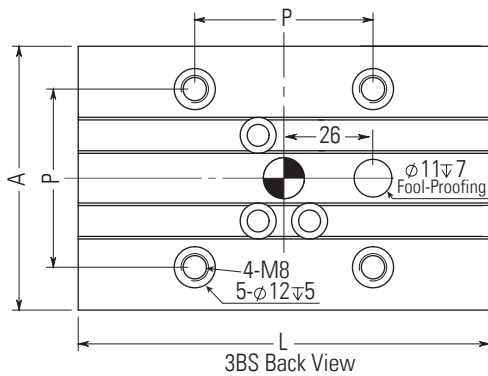
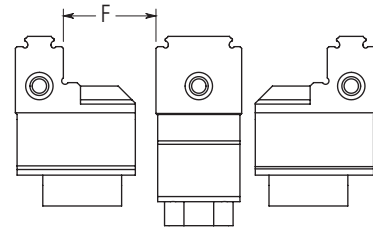
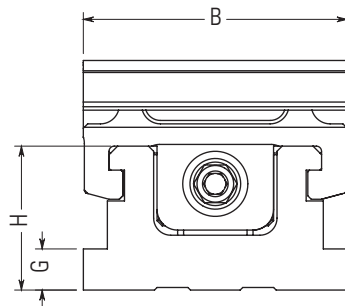
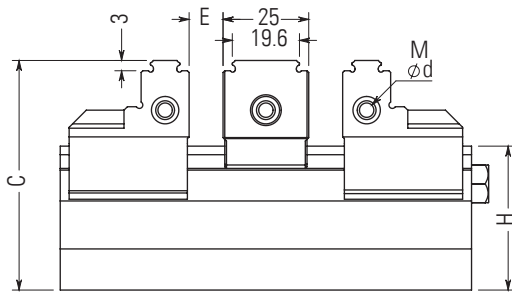
Suitable for light-cutting machining  
 Saves material, shortens production time  
 Improves dimensional stability  
 Material: Steel HRC50

# Grip Center Clamp Series



WEV-3BS040

Technical Data	Clamping Range											Clamping Force	Torque	
	A	B	C	L	P	M	d	H	G	E	F		Vise Assembly	Set/Kg
WEV-3BS040	77	77	67	120	52	5	8	42	12	0-22	22-40	13kN/60Nm	Max.70Nm	3.2
WEV-3BL090	77	77	67	220	52	5	8	42	12	0-65	22-90	13kN/60Nm	Max.70Nm	4.6
WEV-5BS070	125	125	86	180	96	8	12	53	24	0-40	40-70	15.6kN/85Nm	Max.100Nm	9.8
WEV-5BL090	125	125	86	230	96	8	12	53	24	0-57	40-90	15.6kN/85Nm	Max.100Nm	11.4

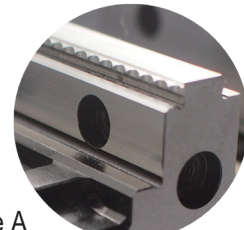


Workpiece Pre-stamping for Steel.

Workpiece Pre-stamping for Aluminum.



Type S



Type A

WEV-03 Optional Accessories		WEV-05 Optional Accessories	
WEV-0300	WEV-0316	WEV-0500	WEV-0520
1 set of 2	1 set of 4	1 set of 4	1 set of 4

# Grip Center Clamp Series

## 5" Grip Vises



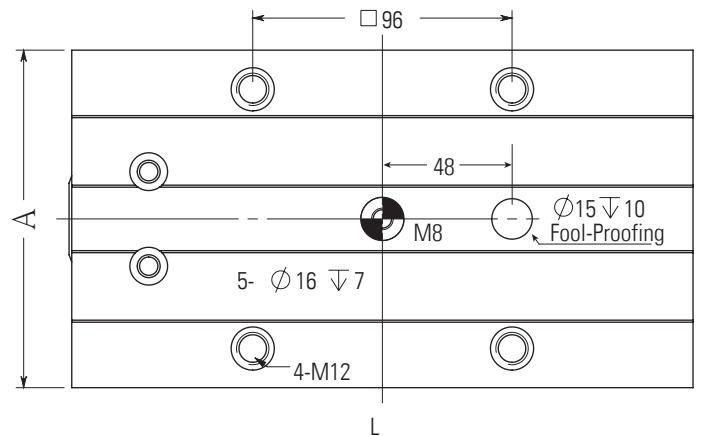
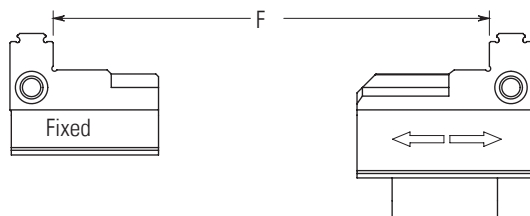
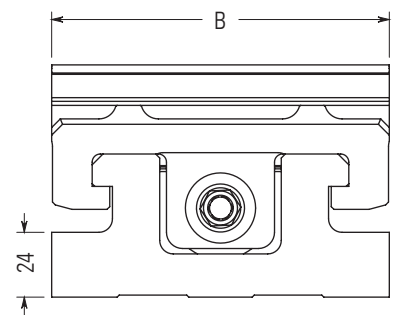
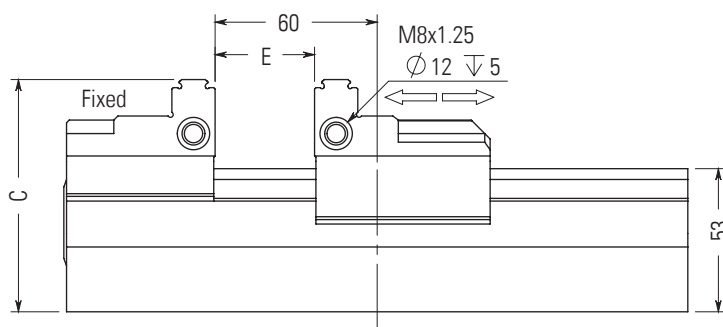
### S-Type Jaws

Suitable for pre-stamping indentations  
 Low clamping force, reduces material deformation  
 Low wear on clamping devices, long service life  
 Small tightening tools, ergonomic design  
 Material: Steel HRC50

### A-Type Jaws

Suitable for light-cutting machining  
 Saves material, shortens production time  
 Improves dimensional stability  
 Material: Steel HRC50

5" Grip Vise	Technical Data	Clamping Range						Clamping Force	Torque	Vise Assembly Set/Kg
		A	B	C	L	E	F			
WEV-5CS200		125	125	86	230	0-115	90-200	15.6kN/85Nm	Max.100Nm	10.6



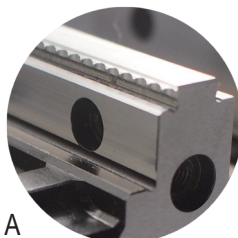
5CS Back View

Workpiece Pre-stamping for Steel.



Type S

Workpiece Pre-stamping for Aluminum.



Type A

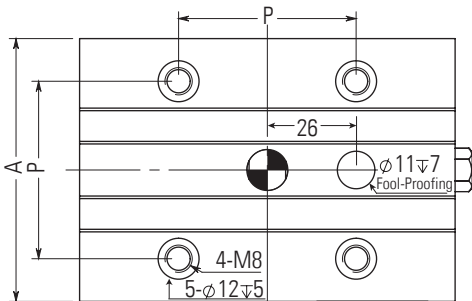
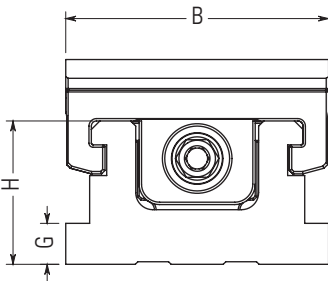
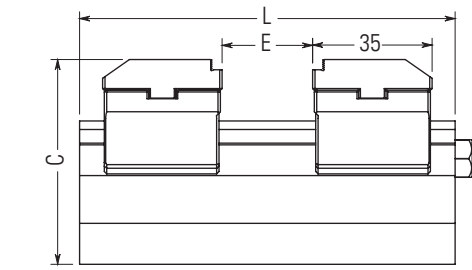
WEV-05 Optional Accessories	
WEV-0500	WEV-0520
1 set of 4	1 set of 4

# Grip Center Clamp Series

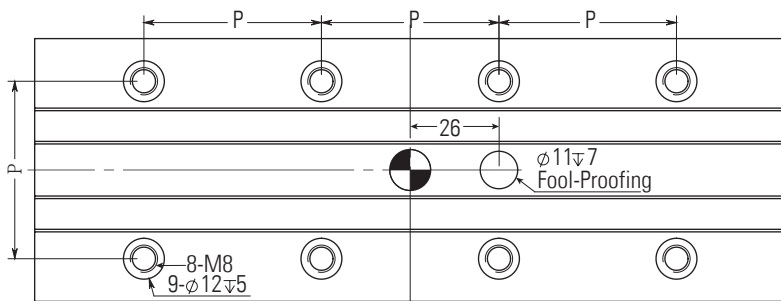
Self-centering vise, suitable for clamping aluminum materials  
Available in E, F, and G type jaws  
(Custom jaw designs allowed)



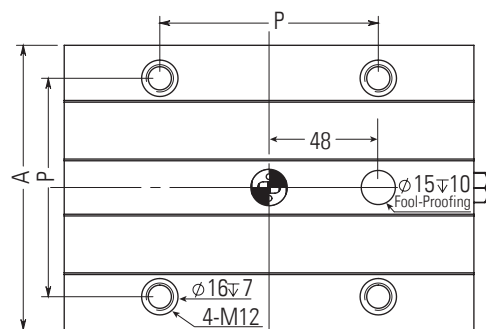
Technical Data	Clamping Range								Clamping	Torque	
	A	B	C	L	P	H	G	E	Force	Vise Assembly Set/Kg	
WEV-3ES050	77	77	60	110	52	42	12	0-50	13kN/60Nm	Max.70Nm	2.5
WEV-2EL160	77	77	60	220	52	42	12	0-160	13kN/60Nm	Max.70Nm	4.1
WEV-5ES080	125	125	77	180	96	53	12	0-80	15.6kN/85Nm	Max.100Nm	4.7
WEV-5EL130	125	125	77	230	96	53	12	0-130	15.6kN/85Nm	Max.100Nm	6.2



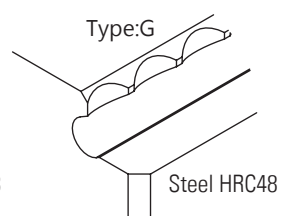
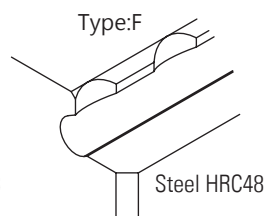
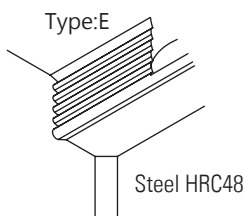
3ES Back View



3EL Back View



5AS 5AL Back View



E / F / G type teeth Suitable for aluminum

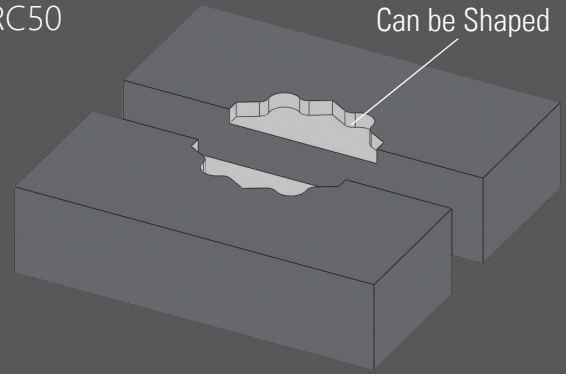
WEV-03 Optional Accessories		WEV-05 Optional Accessories	
WEV-0300	WEV-0316	WEV-0500	WEV-0520
1 set of 2	1 set of 4	1 set of 4	1 set of 4

# Grip Center Clamp Series



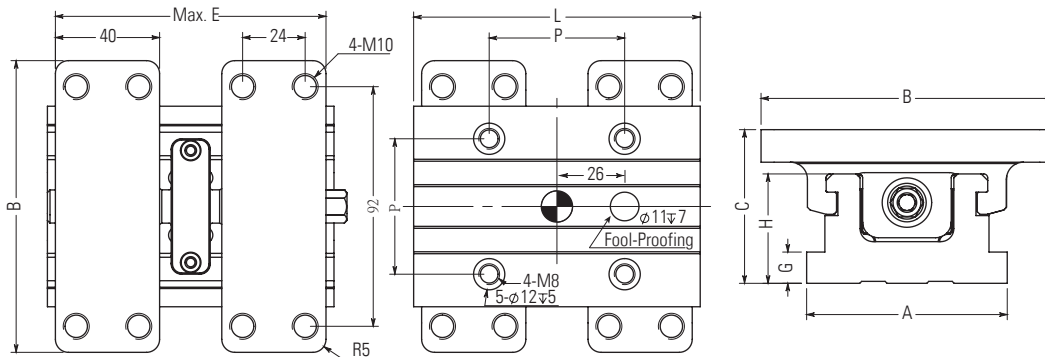
WEV-3DS110

Steel HRC50

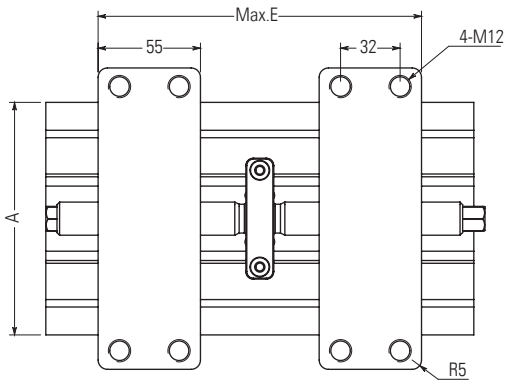


Steel soft jaws, can be self-machined to clamp irregular workpieces

Technical Data	A	B	C	L	P	H	G	E	Clamping Range	Clamping Force	Torque	Vise Assembly Set/Kg
WEV-3DS110	77	112	59	110	52	42	12	125	13kN/60Nm	Max.70Nm	3.1	
WEV-3DL220	77	112	59	220	52	42	12	235	13kN/60Nm	Max.70Nm	4.7	
WEV-5DL230	125	162	77	230	96	53	24	250	15.6kN/85Nm	Max.100Nm	11.4	



3DS Back View



5DL Back View

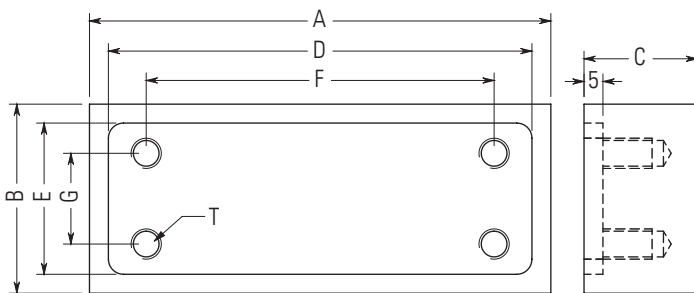
### WEV-03 Optional Accessories

WEV-0300	WEV-0316
2-M10 Cap 	 Ø12 Ø16
1 set of 2	1 set of 4

### WEV-05 Optional Accessories

WEV-0500	WEV-0520
M10 Cap 	 Ø16 Ø20
1 set of 4	1 set of 4

Technical Data	A	B	C	D	E	F	G	T	Material	Set/Kg
3" Soft Jaws WEV-3D030	122	50	30	112	40	92	24	M8	Steel	2.5
5" Soft Jaws WEV-5D048	172	65	48	162	55	142	32	M10	Steel	7.6



# Grip Center Clamp Series



WEV-53060



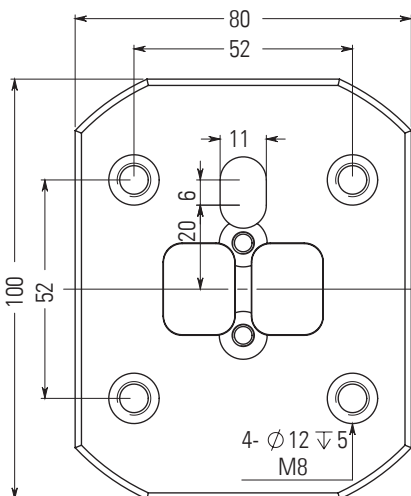
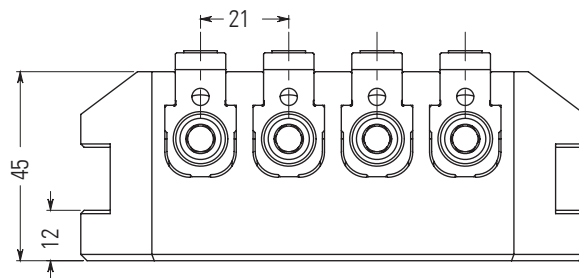
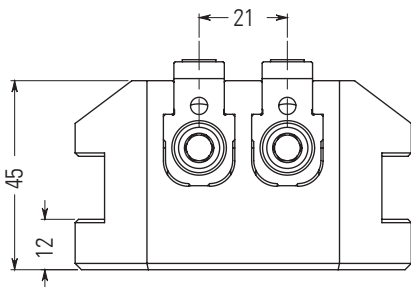
WEV-93060

Material: Steel  
Jaw: HRC 60

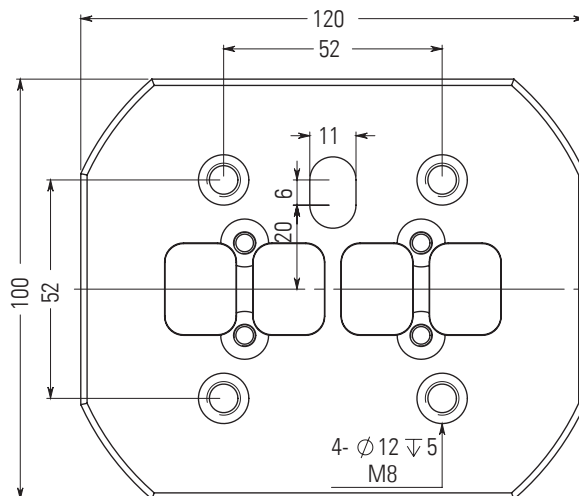
The fixture has excellent clamping effect on serrated cutting surfaces  
Jaw hardness HRC 60, with pull-down and rotation functions  
Replaceable and customizable  
Available in 2-stud and 4-stud models; clamping force: 450kgf per stud.  
Body: Pre-hardened steel

Technical Data	Dimensions	Clamping	Torque	Vise Assembly	Set/Kg
		Clamping Range	Force/T		
WEV-53060	80x100x50mm	10-65	4.4kN/25Nm	Max.30Nm	2.5
WEV-93060	120x100x50mm	10-65	4.4kN/25Nm	Max.30Nm	3.5

Two ultra-miniature fixtures can exert (2x4.4N/25Nm, 4x4.4N/25Nm) clamping force  
Available in two jaw heights: 3mm / 5mm



2-T Back View



4-T Back View

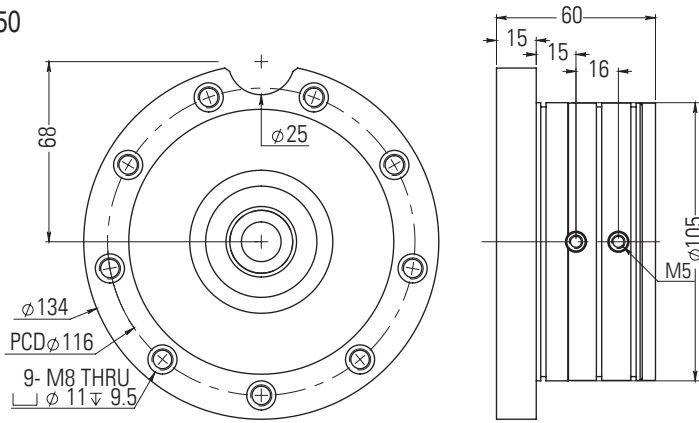
WEV-03 Optional Accessories	
WEV-0300	WEV-0316
 2-M10 Cap	 Ø12 Ø16
1 set of 2	1 set of 4

# Origin Clamp System



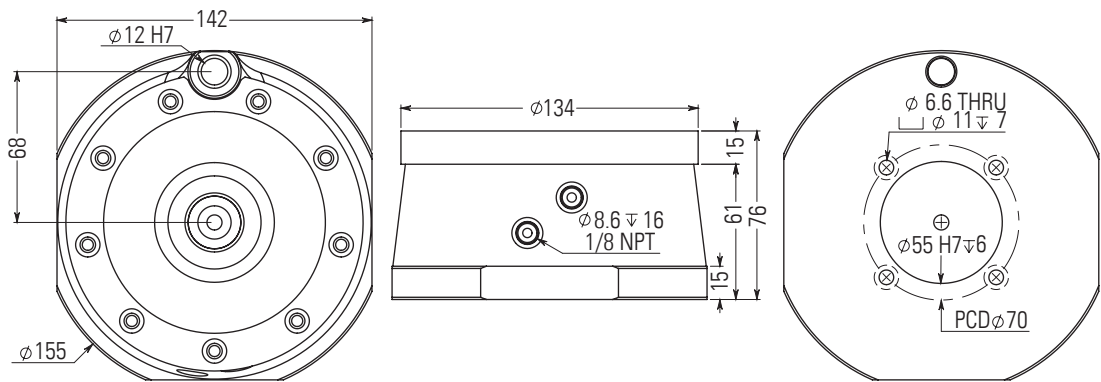
Technical Data	Dimensions	Chuck Clamping		Set/Kg
		Power	Chuck Opens With	
WE-211050	Ø105x60H	20000N	6-10 Bar	3.7
WE-221550	Ø155x76H	15000N	6-10 Bar	5.5
WE-221570	Ø157x62H	20000N	6-10 Bar	6.1

WE-211050

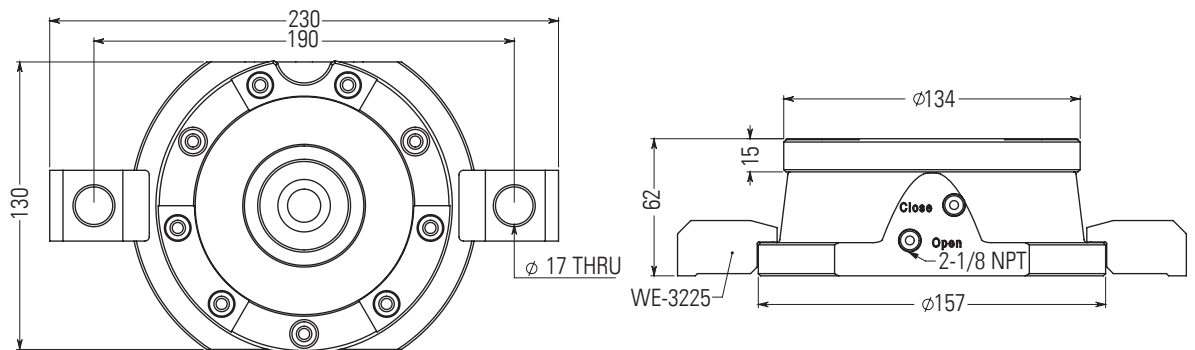


Accessories	
WE-201502	WEV-0500
1 set of 1	1 set of 4

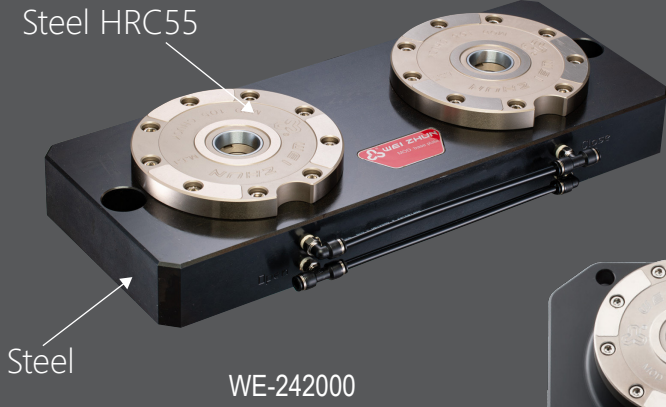
WE-221550



WE-221570



# Origin Clamp System



WE-242000

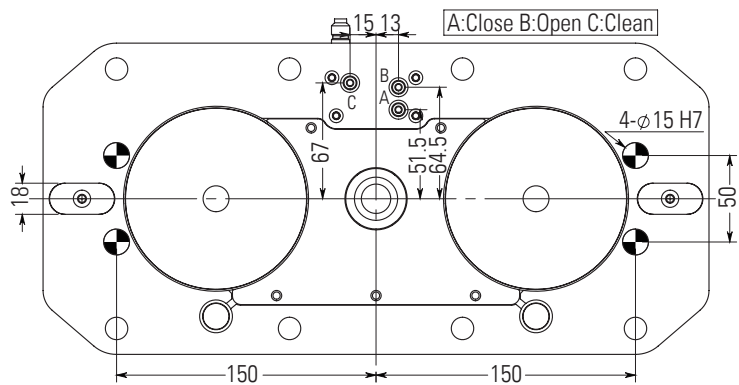
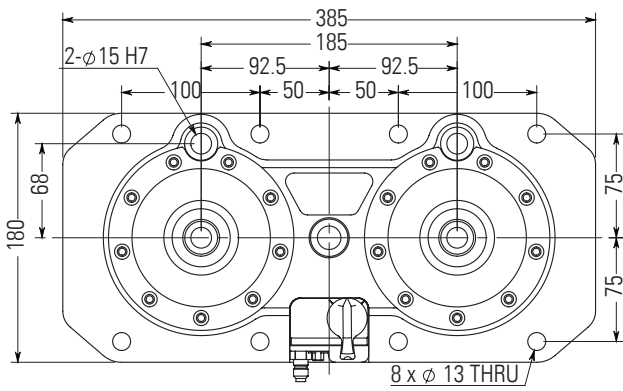


WE-240000

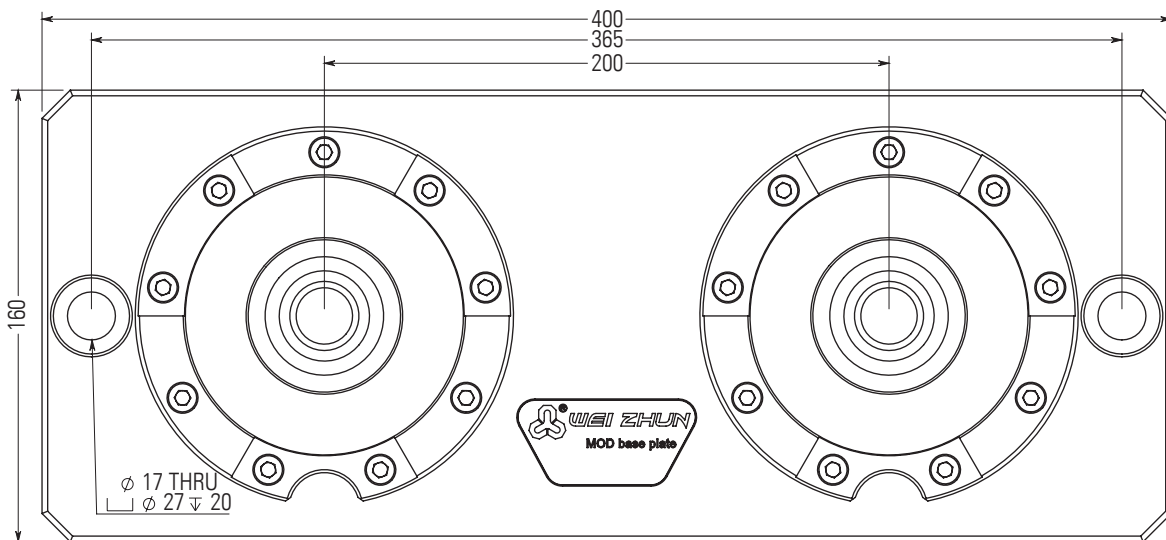


WE-201502

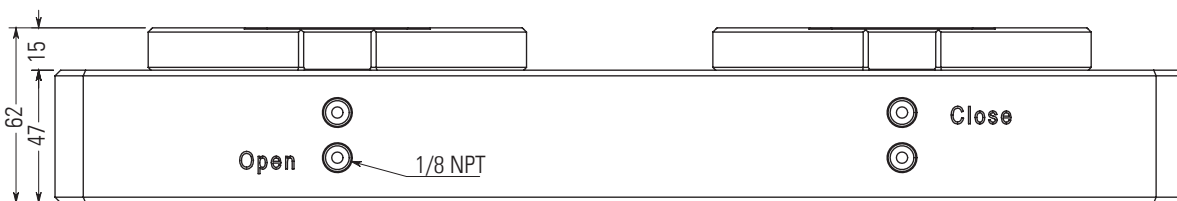
	Technical Data	Dimensions	Repeatability	Chuck Clamping Power	Chuck Opens With	Set/Kg
MOD Base Plate	WE-240000	180x385x62mm	±0.005	40000N / 2 chuck	6-10 Bar	18.1
MOD Base Plate	WE-242000	160x400x62mm	±0.005	40000N / 2 chuck	6-10 Bar	24.0



WE-240000



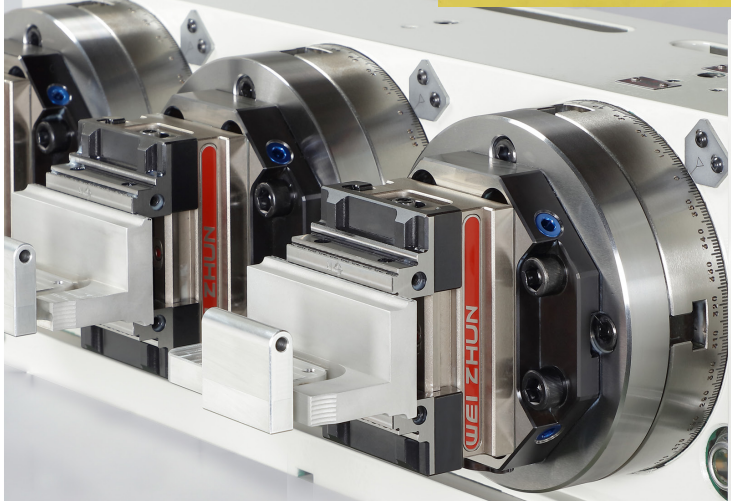
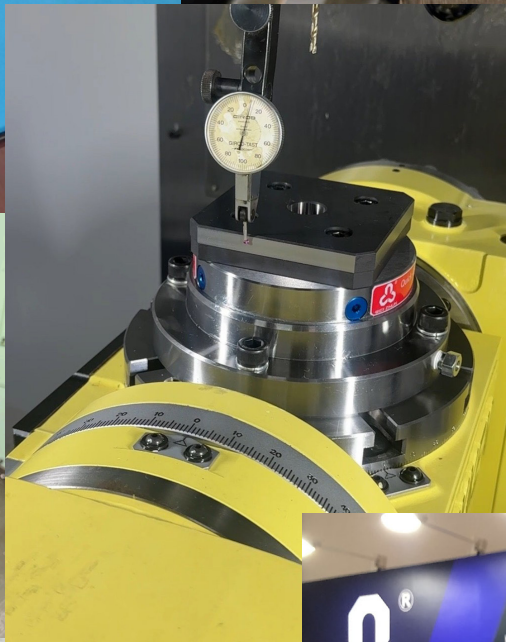
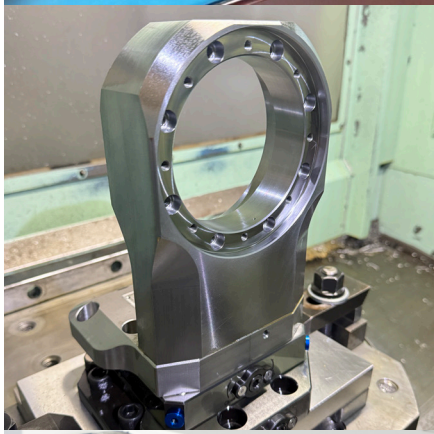
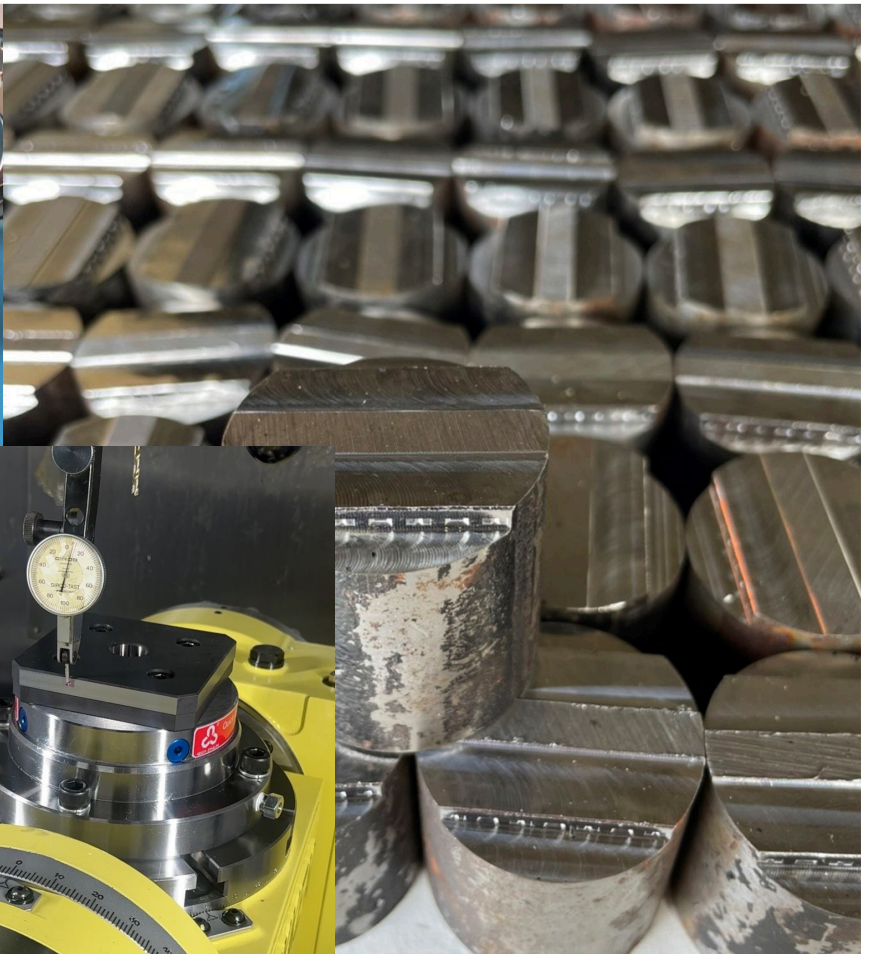
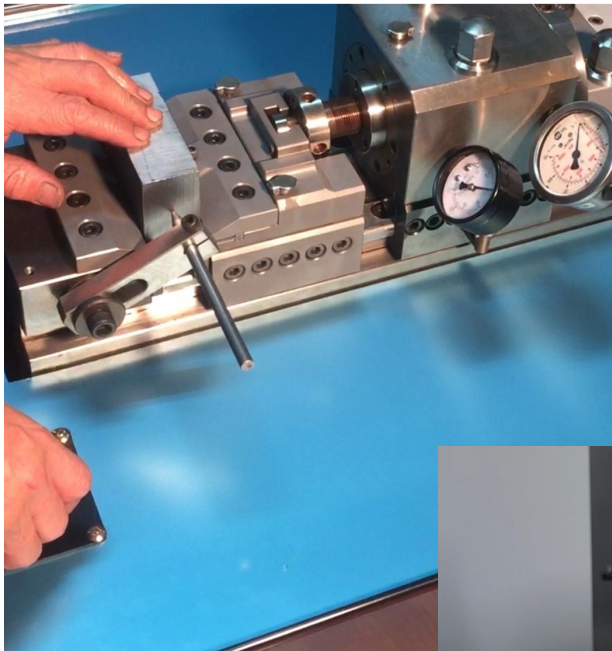
WE-242000

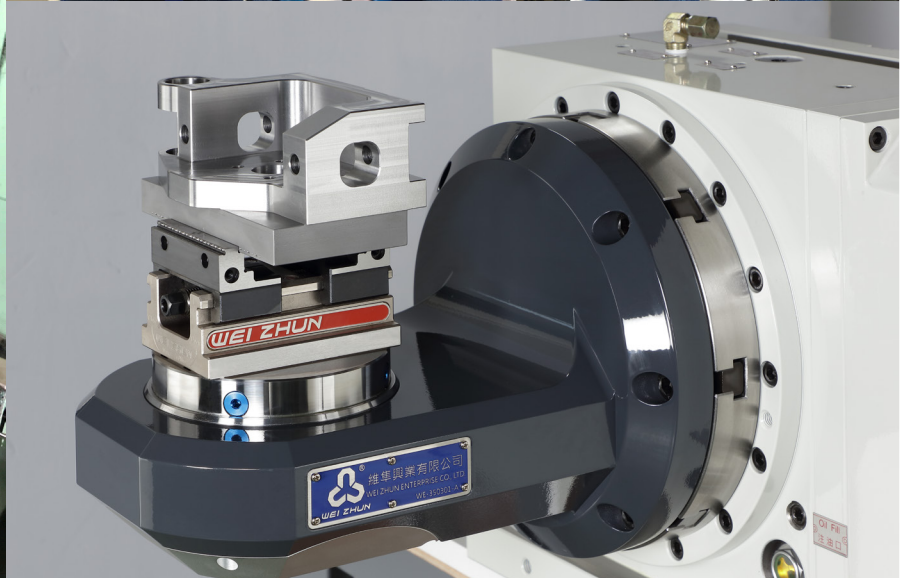
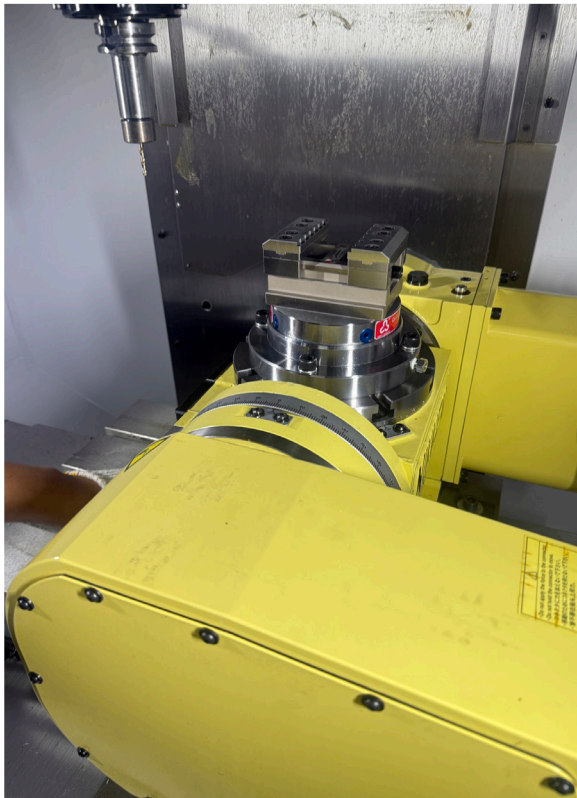


Accessories
WE-201502
1 set of 1

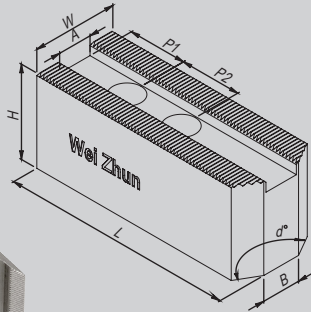
Attachment
WE-5037
1 set of 2

# Processing & Operations



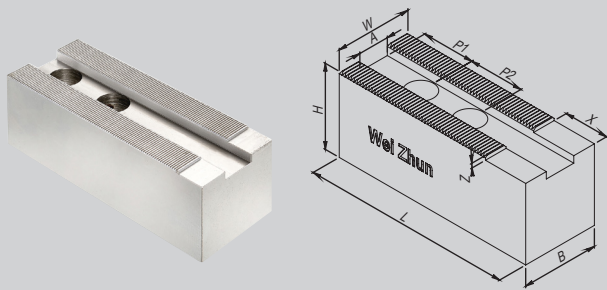
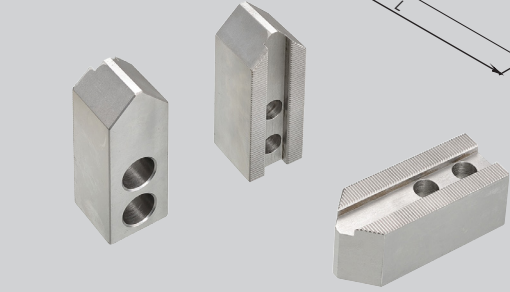


# Soft Jaws for hydraulic chucks



## Serration Pitch 1.5mmx60° Material:Steel

Model	Dimensions										CAP
	L	W	Min. H	Max. H	A	P1	P2	B	Angle d		
WZ-S06H__	73	31	31.5	120	12	15	20	14	120°	M10	
WZ-T06H__						10					
WZ-S08H__	95	35	38	200	14	24	25	16	120°	M12	
WZ-T08H__				100							
WZ-S10H__	110	40	42	200	16	30	30	18	120°	M12	
WZ-T10H__				100							
WZ-S12A	129	50	50	100	18	39	30	22	120°	M14	
WZ-T12AH__				80							
WZ-S12BH__	129	50	50	100	21	39	30	22	120°	M16	
WZ-T12BH__				80							

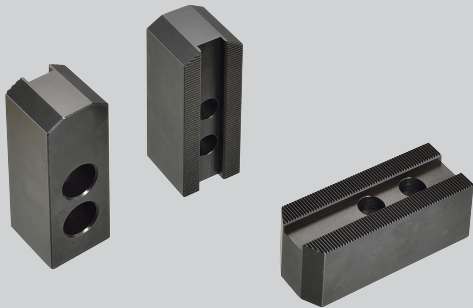


Model	Dimensions									
	L	W	H	A	P1	P2	Z	X	CAP	
WZ-S15H -A22	165	62	62 100 120 150	22	37	43	2	18.5	M20	
WZ-T15H -A22				21						
WZ-S15H -A25.5				25.5						
WZ-S18H__	135	50	60 100	25.5	26	43	2	18.5	M20	

## Serration Pitch 3.0mmx60°

WZ-S21H__	180	62	70 100	25	40	60	3	50	M20
WZ-S24H__									

# Grinding Soft Jaws

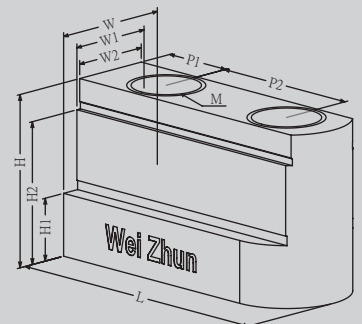
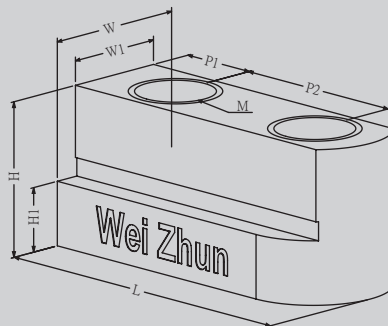
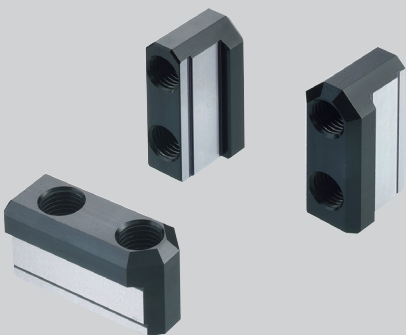


## Serration Pitch 1.5mmx60° Material:Steel

Model	Dimensions			
	L	W	H	Angle d
WZ-GS06	73	36	50	120°
WZ-GT06				90°
WZ-GS08	95	38	50	120°
WZ-GT08				90°
WZ-GS10	110	42	50	120°
WZ-GT10				90°

## T-Nuts

## Material: SCM440 HRC35

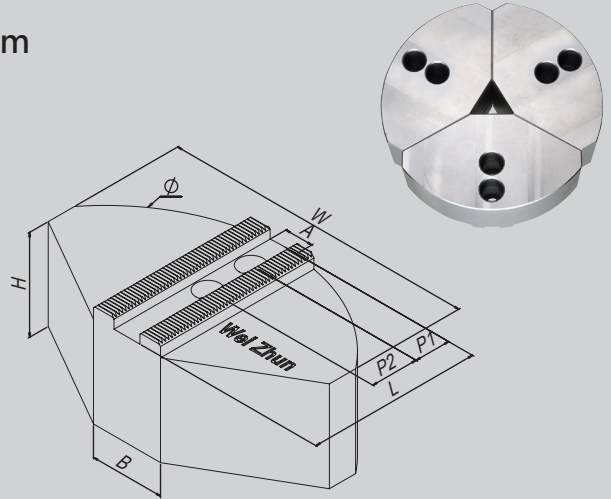


Model	Dimensions									
	L	W	H	H1	H2	W1	W2	P1	P2	M
WZ-JN-06	35	17.5	18.5	7.5		12		7	20	M10
WZ-JN-08	46	20.5	20.5	8.5		14		11	25	M12
WZ-JN-10	51	22.5	21.5	8.5		16		10	30	M12
WZ-JN-12	53.5	29.4	27.5	11.5		21		12.5	30	M16
WZ-JN-15 18	80	33.5	45.5	16.5	37.5	24	22	20	43	M20

# Wrapped Soft Jaws for hydraulic chucks

Serration Pitch 1.5mmx60° Material:Steel / Aluminum

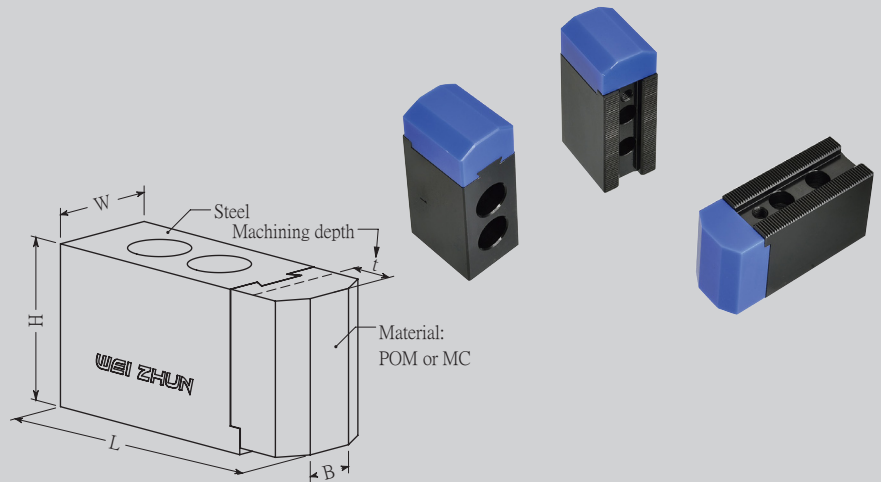
Model	Dimensions								
	L	W	H	A	P1	P2	B	Ø	CAP
WZ-W06H42	73	130	42	12	15	20	31	Ø165	M10
WZ-W06H50			50						
WZ-W06H60			60						
WZ-W08H42	95	165	42	14	24	25	35	Ø210	M12
WZ-W08H50			50						
WZ-W08H60			60						
WZ-W10H50	110	200	50	16	30	30	40	Ø254	M12
WZ-W10H60			60						
WZ-W12AH50	133	240	50	18	39	30	50	Ø305	M14
WZ-W12BH50	133	240	50	21	39	30	50	Ø305	M16
WZ-W12BH60			60						



## Soft hydraulic raw Jaws

Serration Pitch 1.5mmx60°

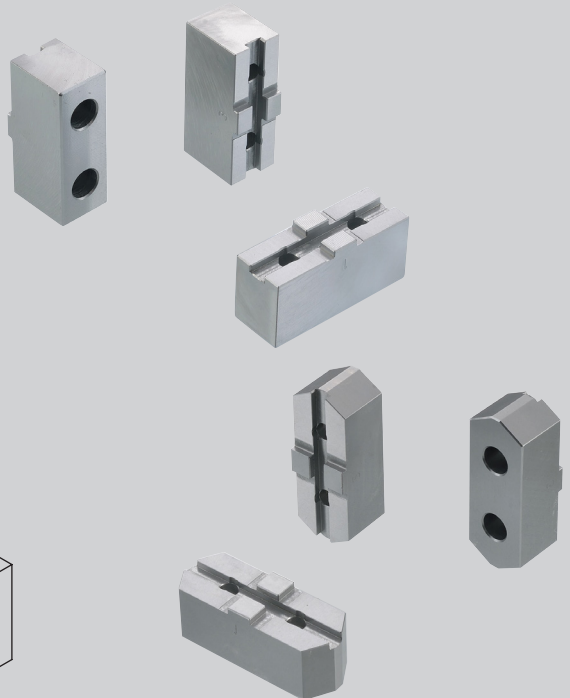
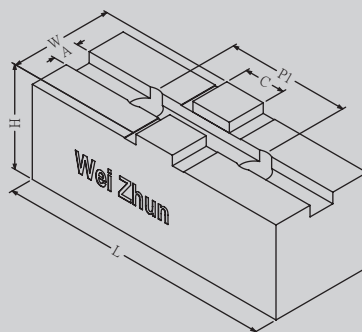
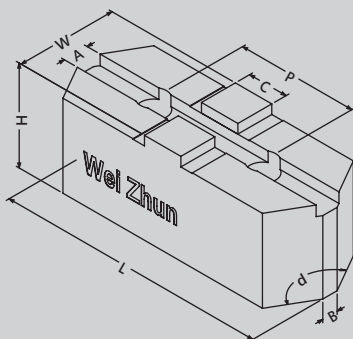
Model	Dimensions					
	L	W	H	B	t	Angle
WZ-PS06	75	31	50	14	11	120°
WZ-PT06				5		90°
WZ-PS08	95	35	50	16	16	120°
WZ-PT08				5		90°
WZ-PS10	110	40	50	18	16	120°
WZ-PT10				5		90°



## Power soft Jaws

Material : Steel

Model	Dimensions								
	L	W	H	A	B	C	P	Angle d	CAP
WZ-SK06H31.7	85	31.7	31.7	7.94	5	12.68	38.1	120	M8
WZ-SK06H37	73	26	37		10				
WZ-SK0708H31.7	95	31.7	31.7	7.94	10	12.68	44.45	120	M10
WZ-SK0708H48	95	31	48		14				
WZ-SK0910H31.7	105	31.7	31.7	12.7	14	19.03	53.98	120	M12
WZ-SK0910H48	110	37	48		19.03				
WZ-SK12H54	125	42	54	12.7	19.03	63.5	76.2	120	M12
WZ-SK12H70	125	42	70		19.03				
WZ-SK16H70	160	50	70	12.7	19.03	76.2	76.2	120	M16
WZ-SK20H80	160	55	80		19.03				





[www.softjaws.com.tw](http://www.softjaws.com.tw)



**WEI ZHUN ENTERPRISE CO.,LTD.**

Sales Office :

Tel : +886-4-26763867 Fax : +886-4-26887985

No. 168-1, Nong'an Rd., Dajia Dist., Taichung City, Taiwan (R.O.C.)

E-mail : [info@softjaws.com.tw](mailto:info@softjaws.com.tw)

Factory :

Fax : +886-37-851588

No.16-3, 2nd Neighborhood, Xinfu, Yuanli Township,  
Miaoli County 35865, Taiwan (R.O.C.)

Copyright © 2026 WEIZHUN Enterprise Co.,Ltd. All Right Reserved.  
This content may be changed without notice. Printed Mar. 2026

